

KARIBAN

REFERENCE : KV2307

SIZES : XS_S_M_L_XL_XXL

COMPOSITION :

Main fabric : Peached and brushed Cotton / Polyester fleece
80/20 - 350 For main fabric, hood lining and hood binding. 80%
cotton / 20%polyester

Main fabric : Peached and brushed Cotton / Polyester / Viscose
fleece 79/20/1 - 350 For main fabric, hood lining and hood
binding. 79%cotton/20%polyester/1%viscose

WEIGHT :

Main fabric : 350 gsm

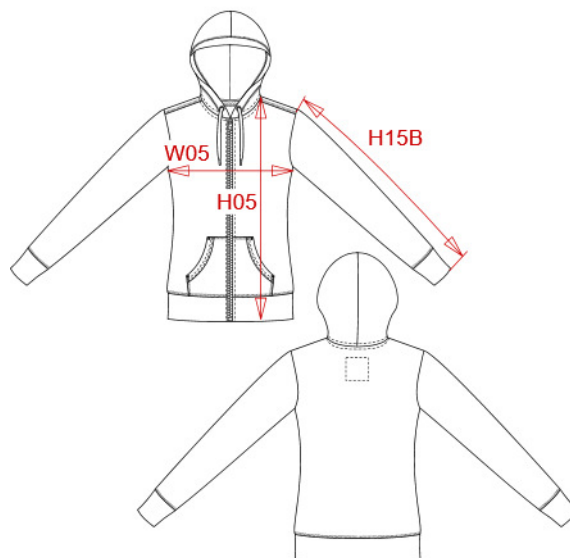
Main fabric : 350 gsm

TECHNICAL DETAIL :

Peached finish

ARTICLE WEIGHT :

690 gr/pc



DESCRIPTION
Français : Sweat-shirt vintage zippé à capuche femme
English : Ladies' vintage zipped hooded sweatshirt
Nederlands : Vintage damessweater met rits en capuchon
Deutsch : Damen Kapuzensweatshirt mit Reißverschluss
Español : SUDADERA VINTAGE - CREMALLERA Y CAPUCHA mujer
Italiano : Felpa donna vintage full zip con cappuccio
Português : Casaco sweatshirt vintage de senhora com capuz

COLORS	PANTONE SERIGRAPHIE
Vintage navy	533C
Vintage charcoal	447C
Vintage dark red	202C
Ash heather	Based on Warm gray 1C
Slub grey heather	Based on 7539C
Night blue heather	Based on 432C

MEASUREMENT						
Description	XS	S	M	L	XL	XXL
H05 (L) Hauteur totale / Total height	61	63	65	67	69	71
W05 (L) 1/2 largeur poitrine à 1.5cm de l'emmanchure / 1/2 chest width at 1.5cm below armhole	45	48	51	54	57	60
H15B (L) Longueur manche avec poignet / Sleeve length with cuff	60	61	62	63	64	65

CARE LABEL

PACKING	
Box	16 pcs / box XS => L:60cm W:40cm H:36cm GW:11.7kg NW:10.2kg S => L:60cm W:40cm H:36cm GW:12.2kg NW:10.7kg M => L:60cm W:40cm H:38cm GW:12.6kg NW:11.1kg L => L:60cm W:40cm H:38cm GW:13.4kg NW:11.9kg XL => L:60cm W:40cm H:40cm GW:14.1kg NW:12.6kg XXL => L:60cm W:40cm H:40cm GW:14.4kg NW:12.9kg